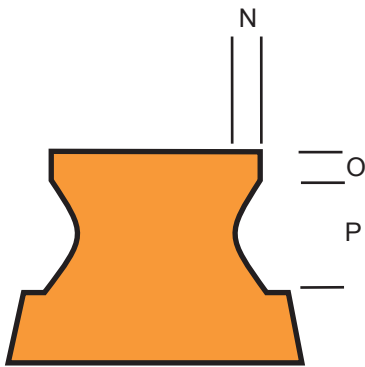


DIMENSIONS

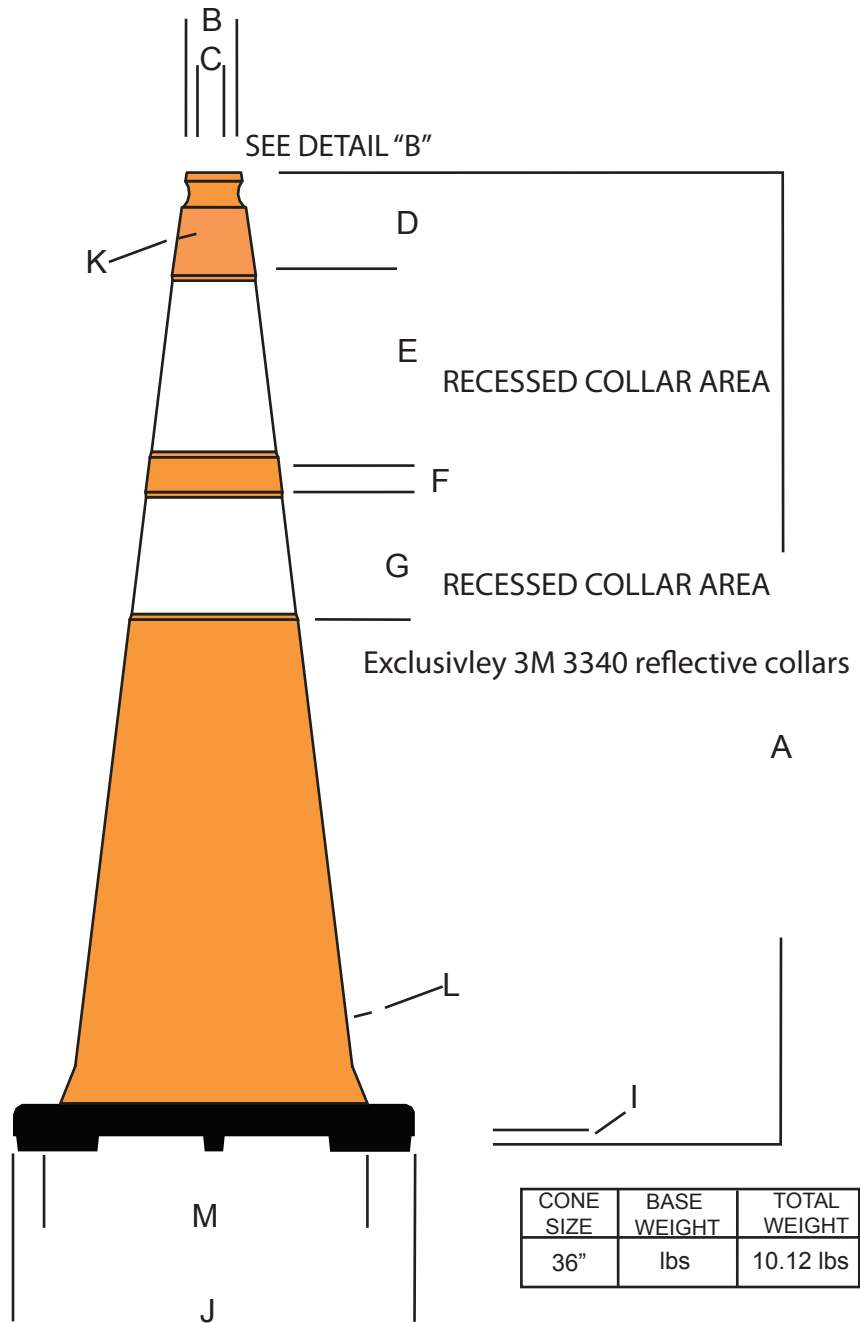
A	36.00"
B	1.875"
C	1.25" DIAMETER
D	3.75"
E	6.5"
F	2.0"
G	4.5"
H	1.5"
I	.625"
J	14.50"
K	.14" WALL THICKNESS
L	.16" WALL THICKNESS
M	10.00"

DETAIL "B"

N	.375" RECESS
O	.3125"
P	1.0"



SEE DETAIL "A" BELOW



CONE SIZE	BASE WEIGHT	TOTAL WEIGHT
36"	lbs	10.12 lbs

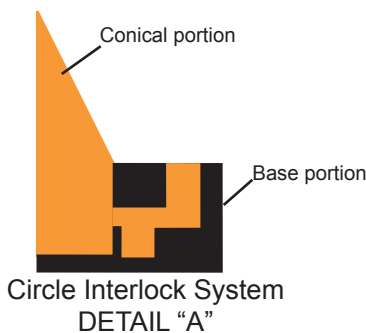
Notes:

Injection molded PVC traffic cone

Conical section manufactured from 100% recyclable flourescent orange PVC

Base manufactured form 100% post industrial recycled black PVC

Base makes up 60% of the over all weight of cone so as to stablize cone in windy conditions.



	<p>36" TRAFFIC CONE WIDE BODY RS90045CT+3M64</p>	
	<p>JBC SAFETY PLASTIC INC. 16750 Chestnut St CITY OF INDUSTRY CA 91748 www.jbcsafety.com</p>	
<p>Date 5/30/13</p>	<p>REVOLUTION SERIES</p>	<p>DWG. NO. RS90045CT+3M64</p>